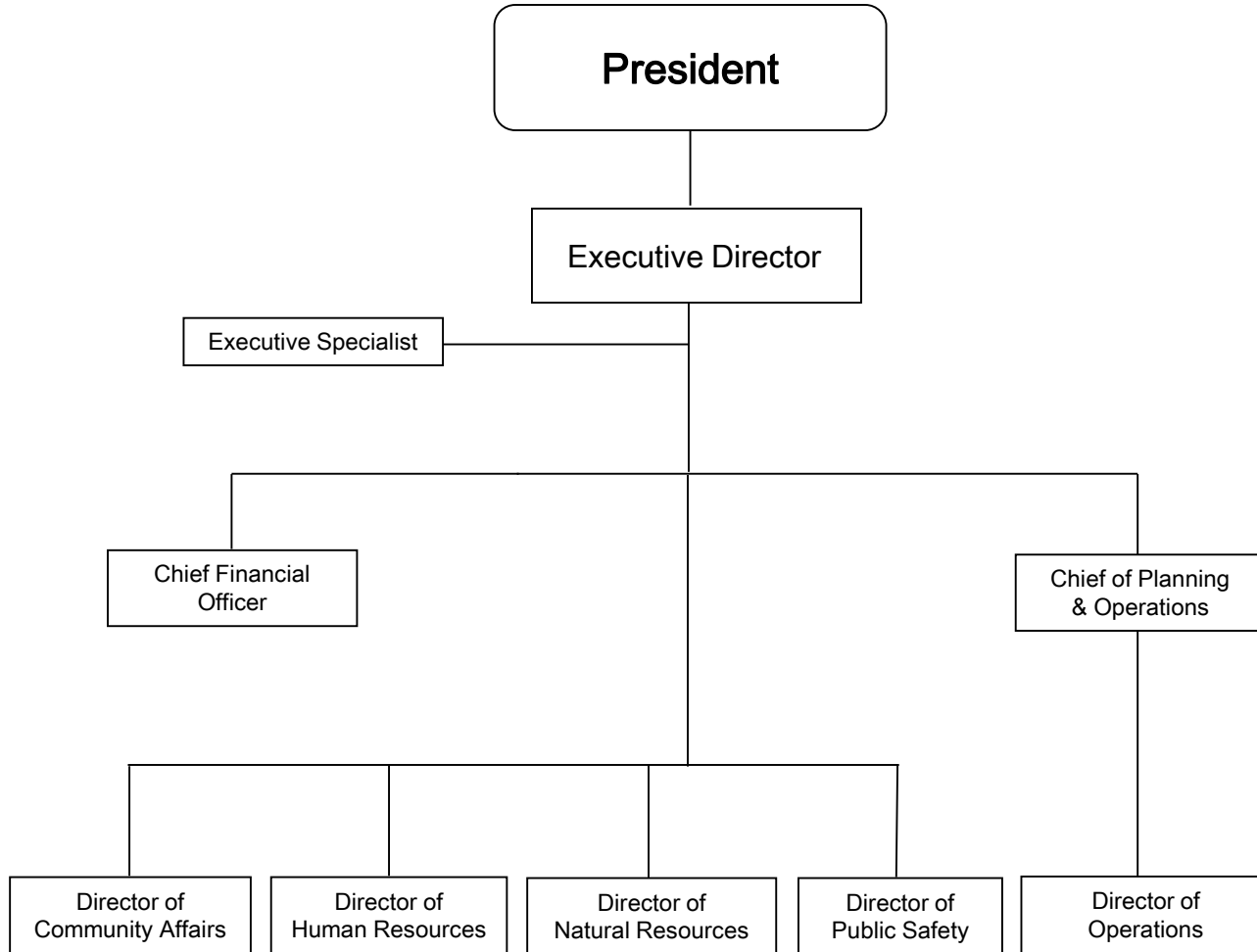




Forest Preserve District of Kane County

Leadership Team

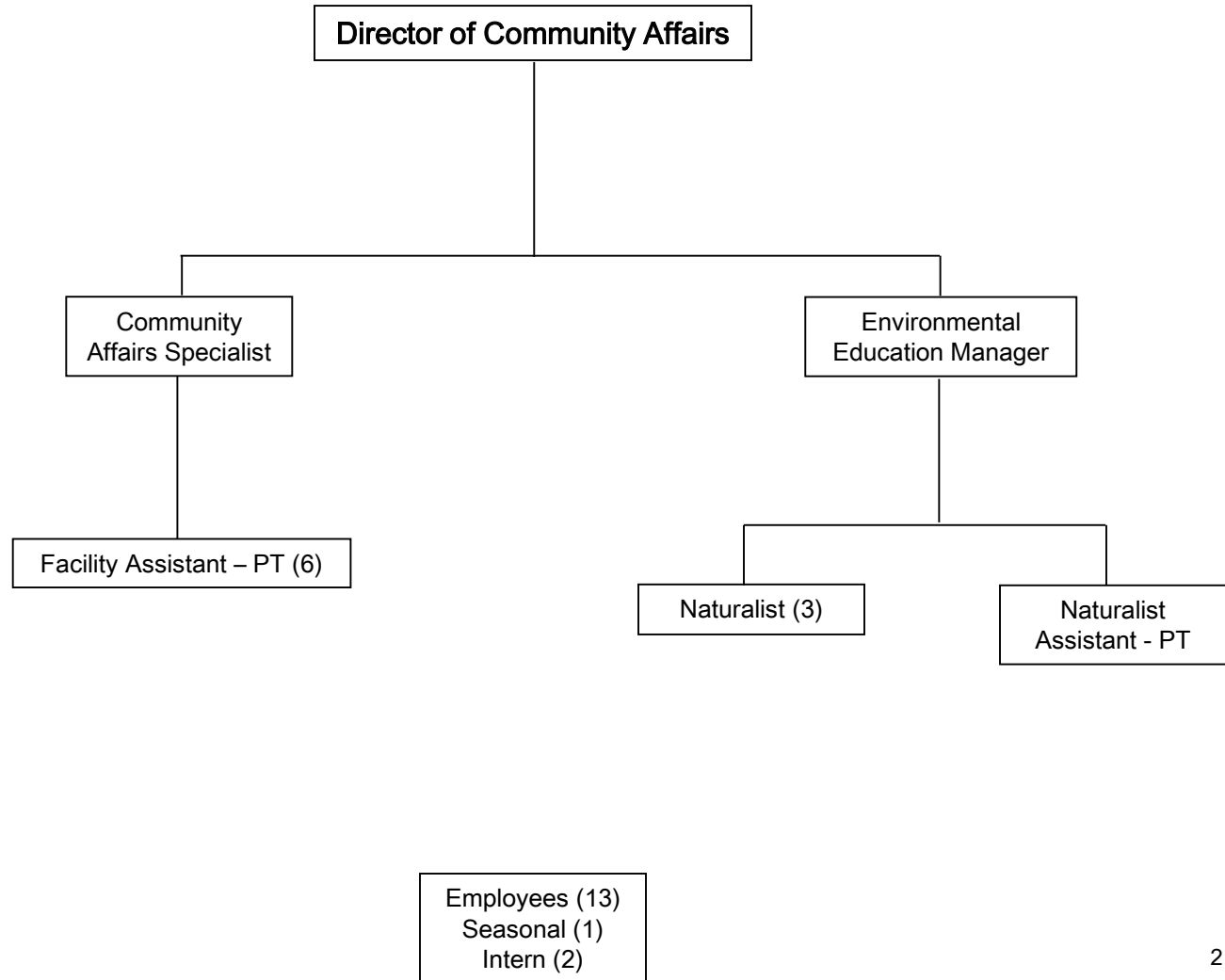
November 2018





Community Affairs Department

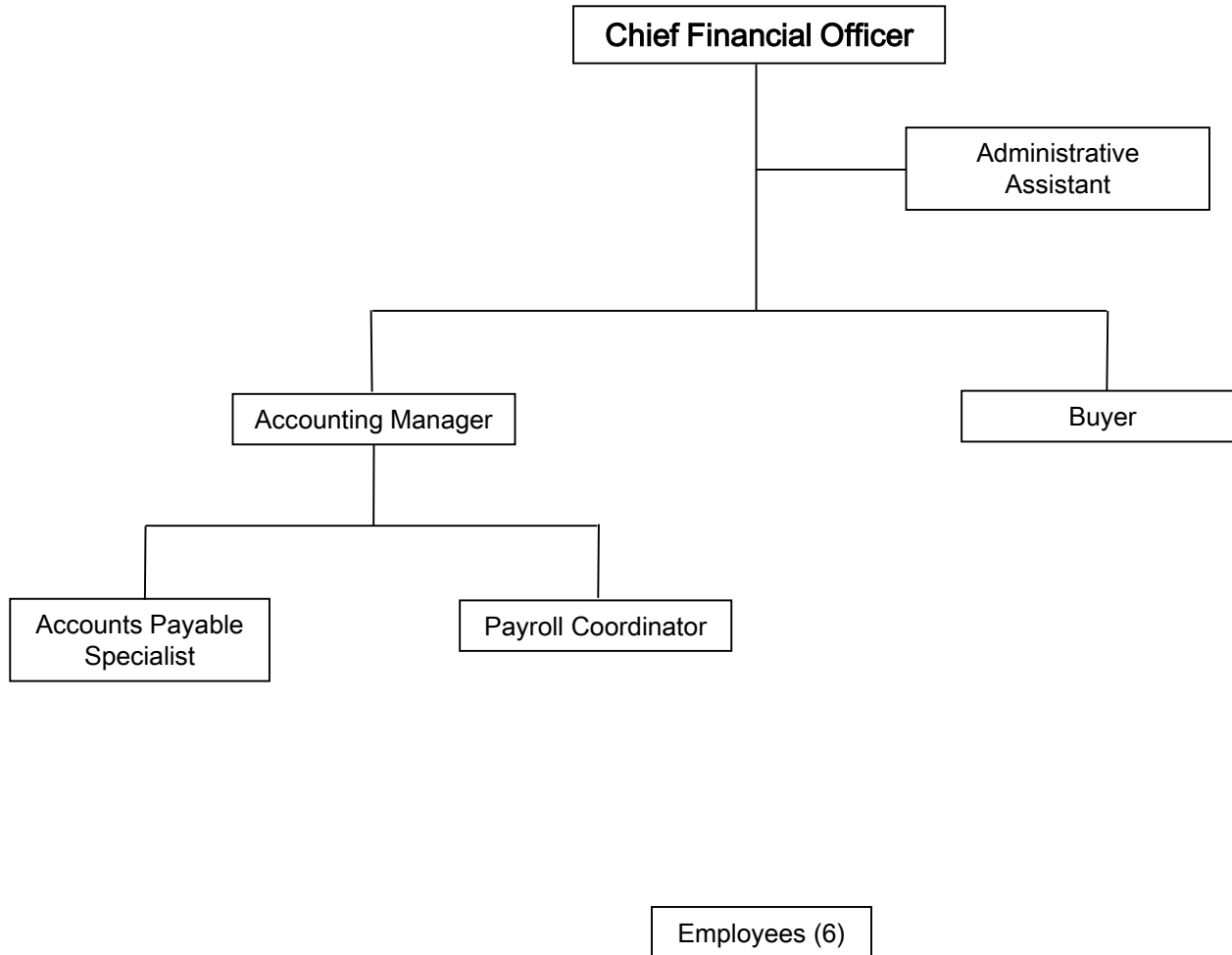
Forest Preserve District of Kane County





Finance Department

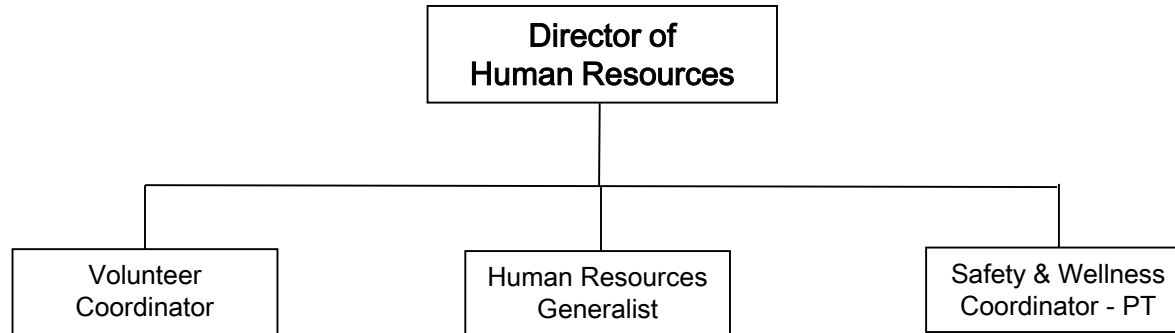
Forest Preserve District of Kane County





Human Resources Department

Forest Preserve District of Kane County

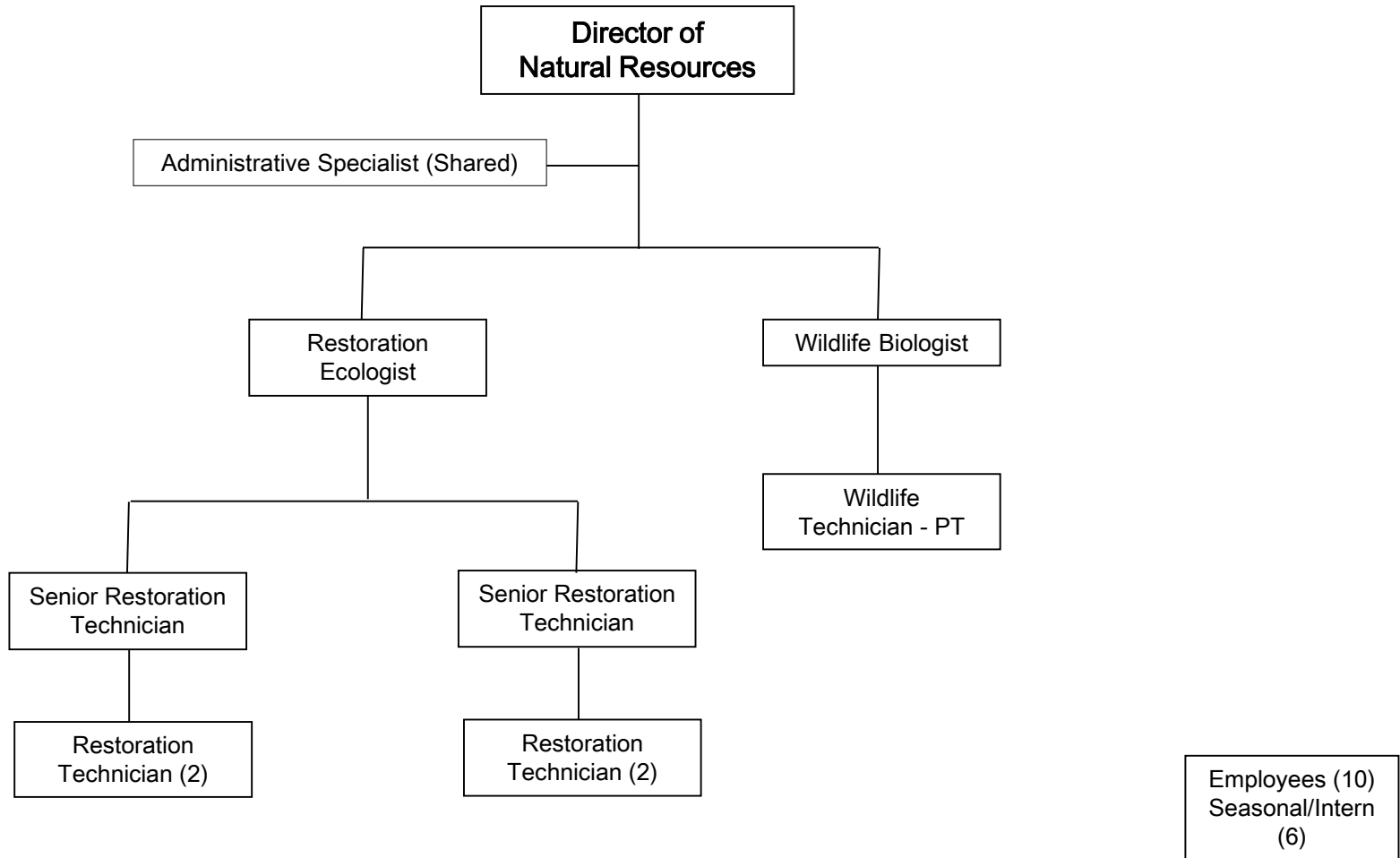


Employees (4)
Intern (1)



Natural Resources Management Department

Forest Preserve District of Kane County

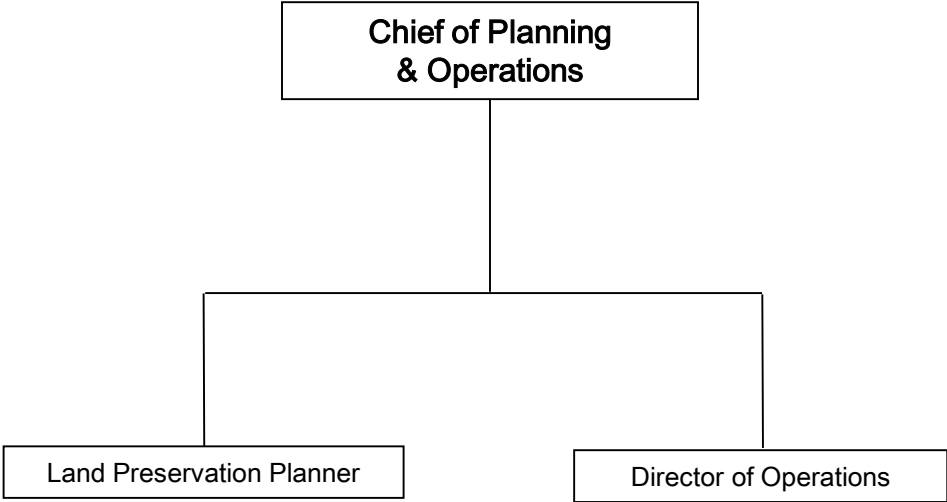




Planning & Operations Department

Forest Preserve District of Kane County

Chart 1 of 5



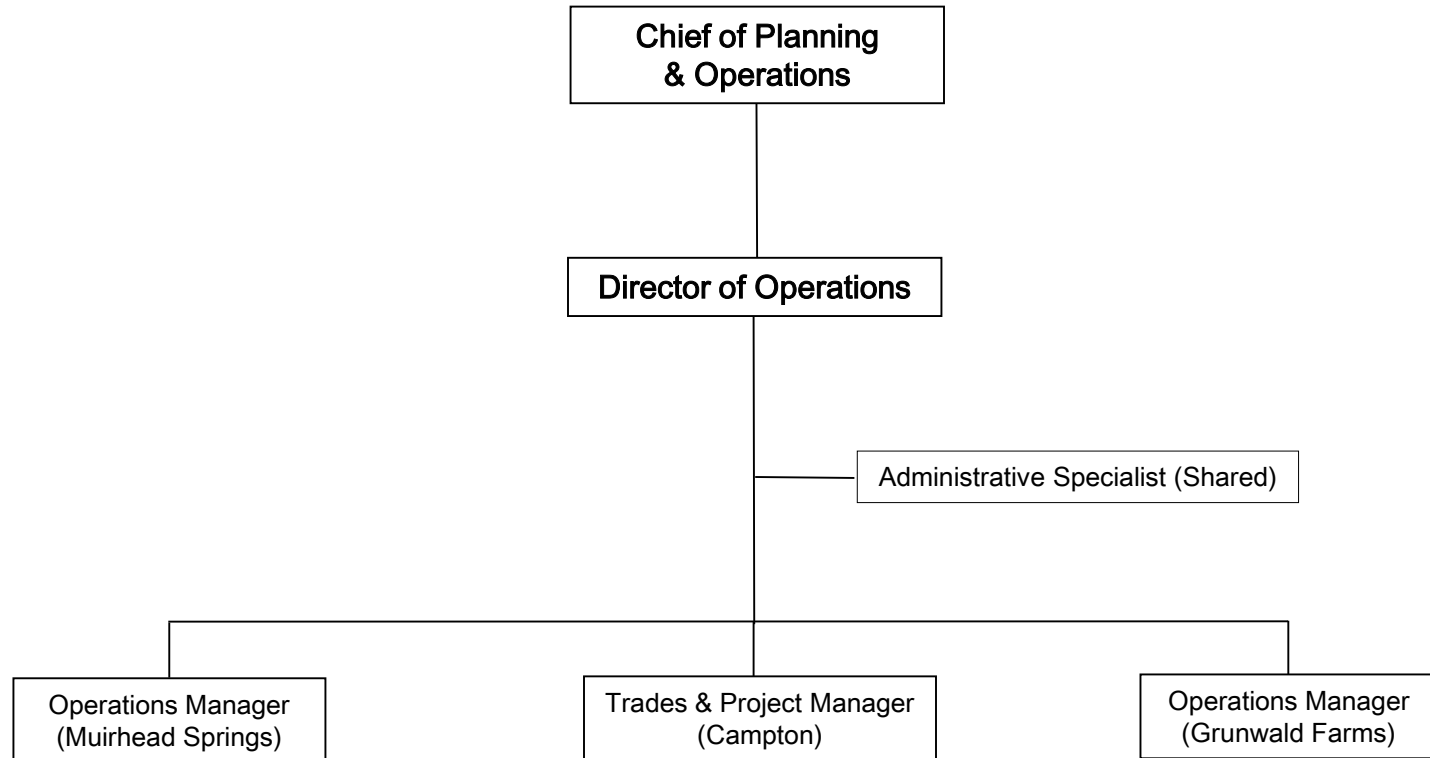
Employees (42)
Seasonal/Intern
(50)



Planning & Operations Department

Forest Preserve District of Kane County

Chart 2 of 5

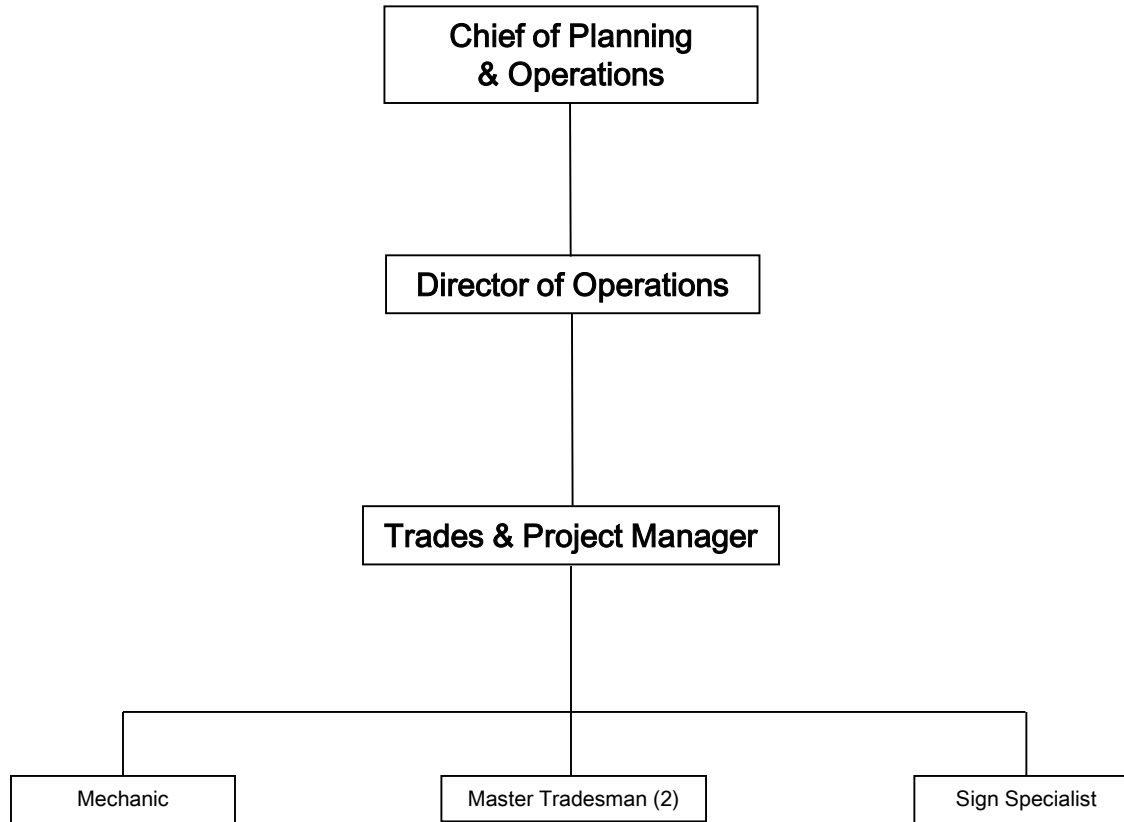




Planning & Operations Department

Forest Preserve District of Kane County

Chart 3 of 5

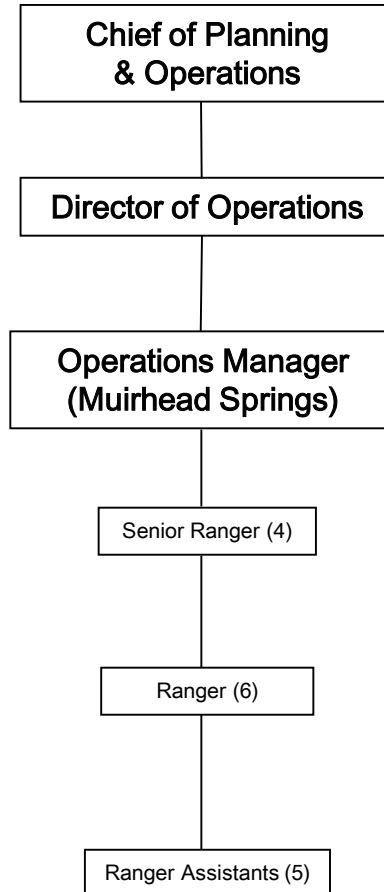


Employees (5)
Seasonal (1)



Planning & Operations Department

Forest Preserve District of Kane County

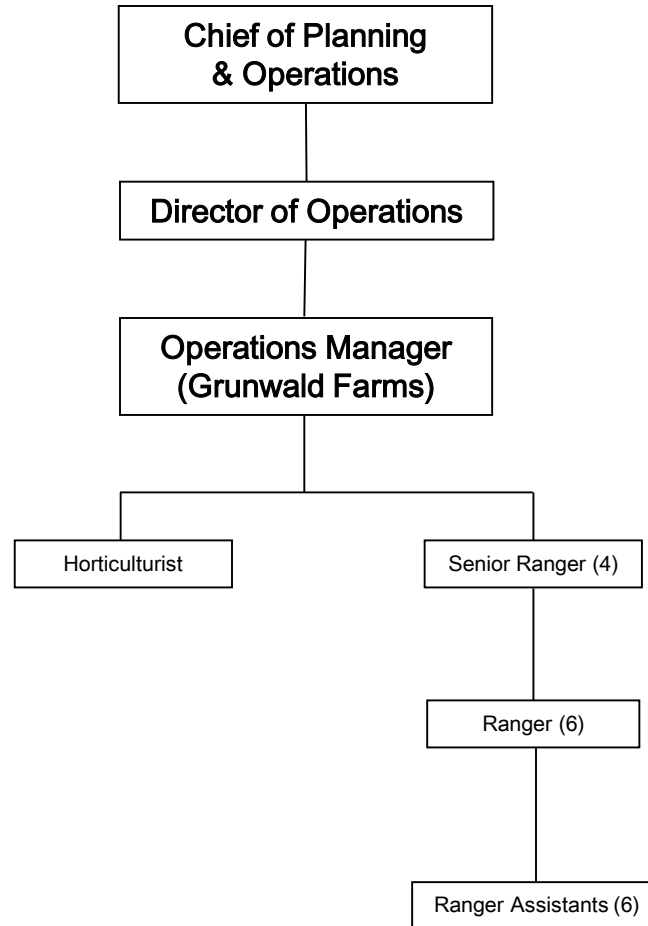


Employees (16)
Seasonal (22)



Planning & Operations Department

Forest Preserve District of Kane County

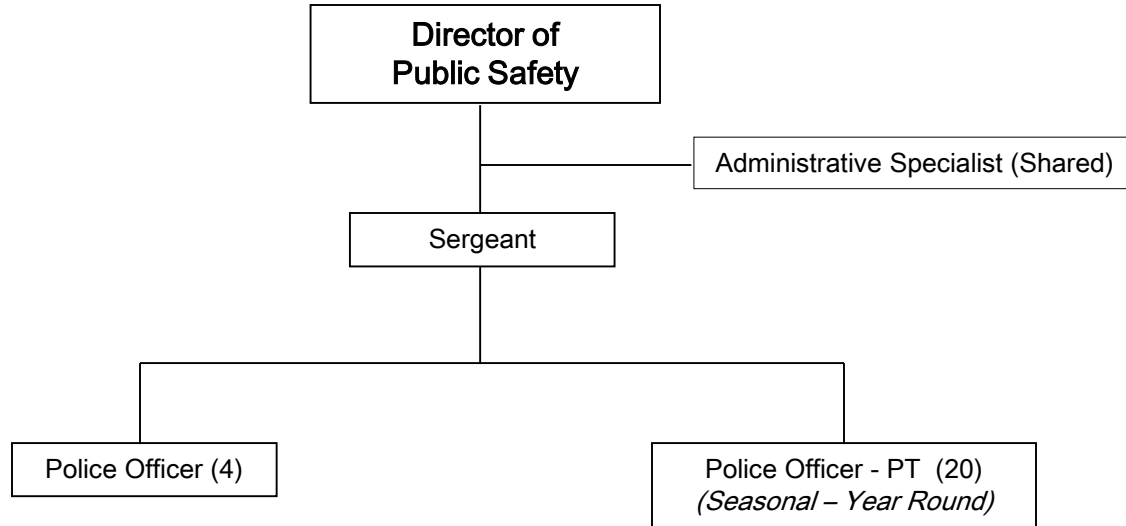


Employees (18)
Seasonal (26)



Public Safety Department

Forest Preserve District of Kane County



Employees (6)
Seasonal (20)