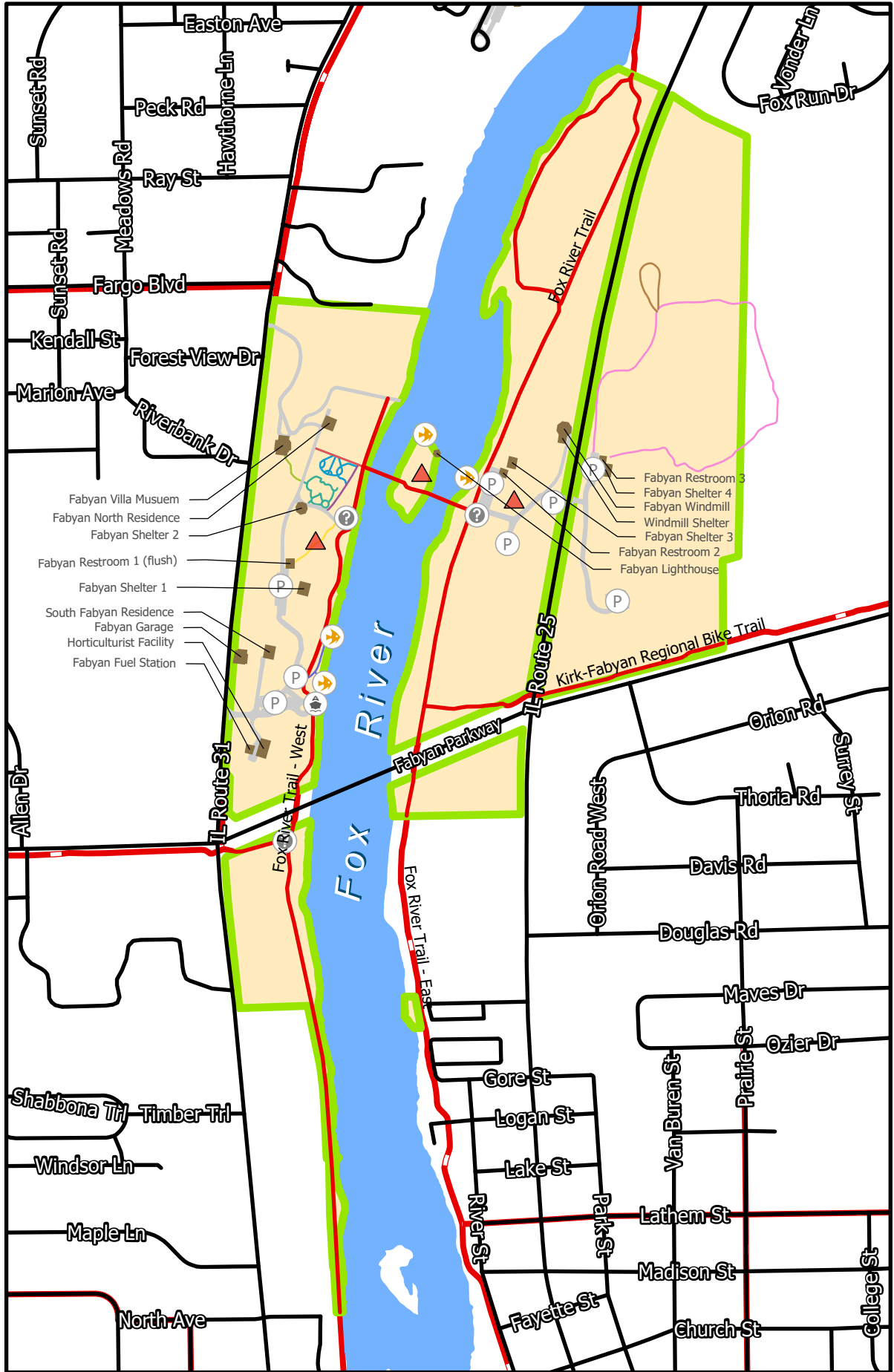




Fabyan Forest Preserve



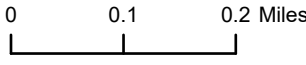
West Side Entrance - (Villa/Japanese Garden)
 1925 Batavia Avenue,
 IL Route 31,
 East Side Entrance - (Windmill)
 1500 Crissey Avenue,
 IL Route 25,
 Geneva, IL 60134
 Both entrances just north of Fabyan Pkwy.

Acreage = 208
 Total trail miles = 4.19

Information: (630) 232-5980
www.kaneforest.com
 Hours: Daily, Sunrise-Sunset

LEGEND

- Picnic Area
 - Information
 - Parking
 - Boat Launch
 - Fishing
 - Forest Preserve Road/Parking
 - Forest Preserve Structures
 - Fox River
 - Forest Preserve Boundary
- Trail Name, Miles
- Centennial Garden Walk, 0.06
 - Centennial Garden Walk, 0.23
 - Connector Trail, 0.04
 - Connector Trail, 0.07
 - Connector Trail, 0.1
 - East Loop Trail, 0.71
 - East Loop Trail Loop, 0.13
 - Japanese Garden Walk, 0.17
 - Riverfront Trail, 0.11
 - Regional Trails



Map Created: 9/28/2020